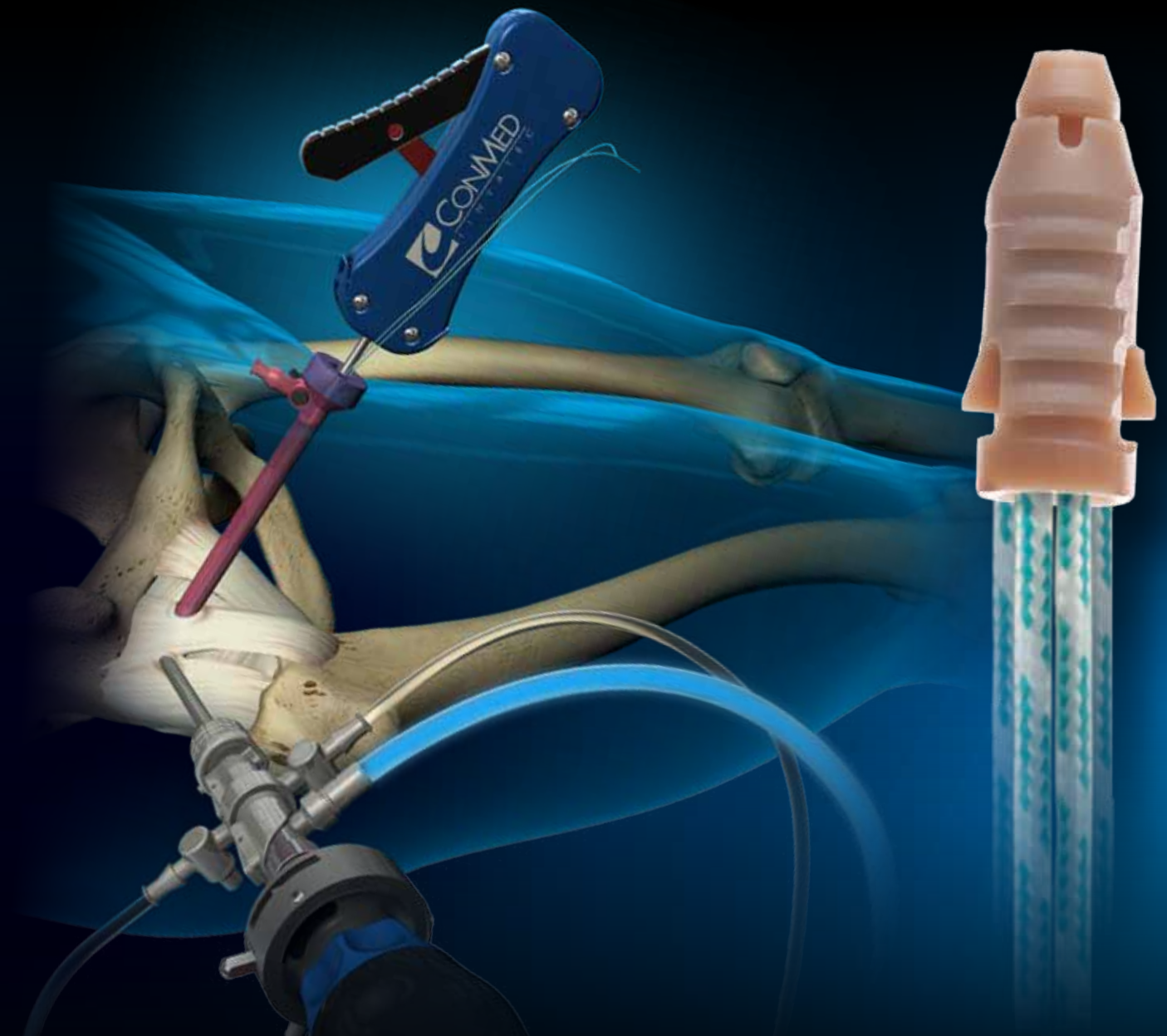


**NEW**

# PopLok™

**2.8 & 3.3mm All PEEK Knotless Anchor**



- Can be Single loaded with #2 Hi-Fi® Suture or Double loaded with #0 Hi-Fi Suture
- Combination press-fit rib design and subcortical wings enhance fixation
- Sutures can be individually tensioned separately from anchor seating
- Anchor is cannulated to channel growth factors

**Clinical Use** Hip Labral Repair

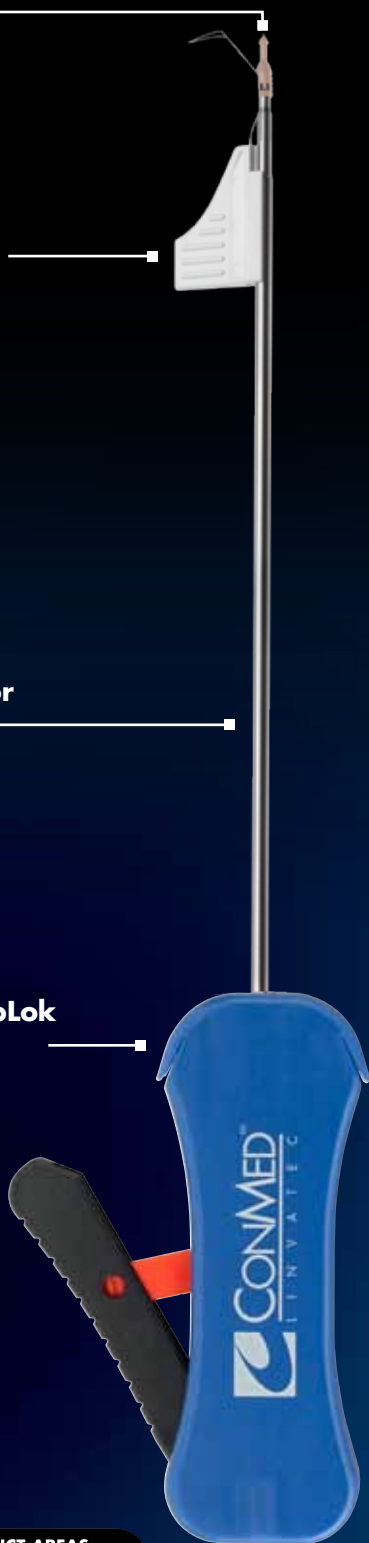
**CONMED**  
LITVATEC

Unique hole-finding tip

Easy-to-load Suture Tab

Ideal length for hip repair

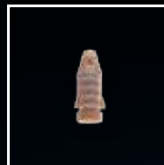
Ergonomic PopLok Handle Design



## 2.8 & 3.3mm PopLok™ Suture Anchors:

These all-PEEK knotless anchors are constructed utilizing the popular PopLok design and are ideal for Labral Repair.

*The 2.8mm design boasts the smallest size double loaded knotless anchor available on the market!*



Actual Size: 2.8mm

### Mean Pull-Out Strengths

2.8mm – 174 Newtons

3.3mm – 247 Newtons

## ORDERING INFORMATION

### PopLok™ Suture Anchor

- GKP-2801** 2.8mm PopLok suture anchor with one #2 Hi-Fi® suture
- GKP-2802** 2.8mm PopLok suture anchor with two #0 Hi-Fi sutures
- GKP-3301** 3.3mm PopLok suture anchor with one #2 Hi-Fi suture
- GKP-3302** 3.3mm PopLok suture anchor with two #0 Hi-Fi sutures

### PopLok Instrumentation

- BKL-00M** 2.8/3.3mm PopLok Drill Bit
- BGU-00M** PopLok Guide



CrossFT™ and PopLok™ are comprised of PEEK-OPTIMA® polymer from Invibio® Biomaterial Solutions. PEEK-OPTIMA and INVIBIO are registered trademarks of Invibio Ltd. All Rights are Reserved.



This product contains Dyneema® Purity. Dyneema® Purity is a registered trademark of Royal DSM N.V.

Visit [Linvatec.com](http://Linvatec.com) today to learn more.

CONMED CORPORATION PRODUCT AREAS:

ARTHROSCOPY • ELECTROSURGERY • ENDOSCOPY • ENDOSURGERY • GASTROENTEROLOGY • INTEGRATED SYSTEMS • PATIENT CARE • POWERED INSTRUMENTS • PULMONOLOGY



11311 Concept Boulevard  
Largo, FL 33773-4908  
(727) 392-6464  
Customer Service: 1-800-237-0169  
FAX: (727) 399-5256  
International FAX: +1 (727) 397-4540  
email: [customer\\_service@linvatec.com](mailto:customer_service@linvatec.com)  
[www.linvatec.com](http://www.linvatec.com)