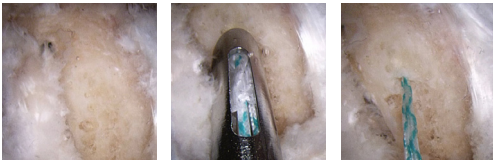




# Shoulder Restoration System

## Y-Knot™ 1.3mm All-Suture Anchor

Small size, soft construct, and secure 360° FormFit™ fixation in the pilot hole.

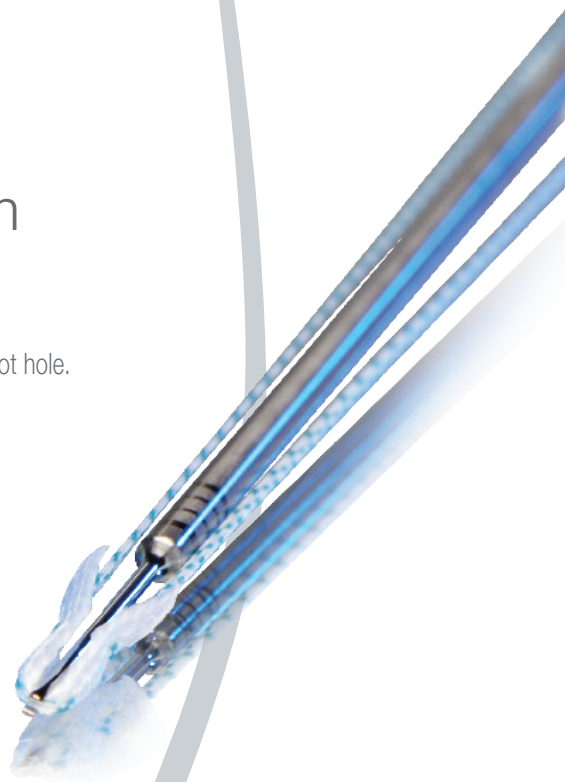


Minimizes damage to the bone

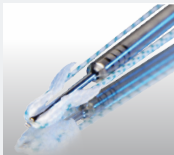
Minimal displacement (<1mm)  
under cyclic load

No hard loose bodies in the joint

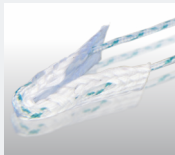
Larger tissue-to-bone healing surface



**SOFT**



**SMALL**

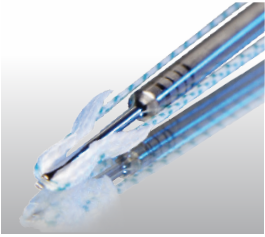


**SECURE**

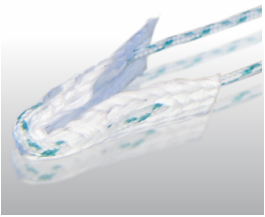


Learn more  
about the Y-Knot™  
anchor and other  
innovative products.  
Call 800-237-0169  
or visit [linvatec.com](http://linvatec.com).

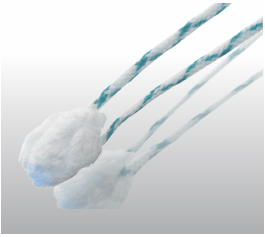
## Shoulder Restoration System



**Soft.** The Y-Knot™ All-Suture Anchor from ConMed Linvatec is made entirely of high strength UHMWPE Suture. By eliminating the possibility of hard loose bodies in the joint, there is lower risk for chondral damage.



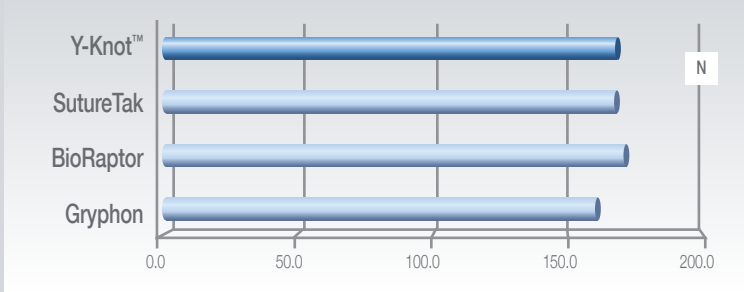
**Small.** A 1.3mm drill-bit is utilized to form the pilot hole for the anchor. Its small size means less bone removal, more tissue-to-bone contact for better healing, and the ability to place anchors where you want them.



**Secure.** When deployed, the anchor contracts vertically and expands laterally, forming a 360° FormFit™ fixation within the pilot hole. This ensures firm, reliable fixation throughout the healing period.

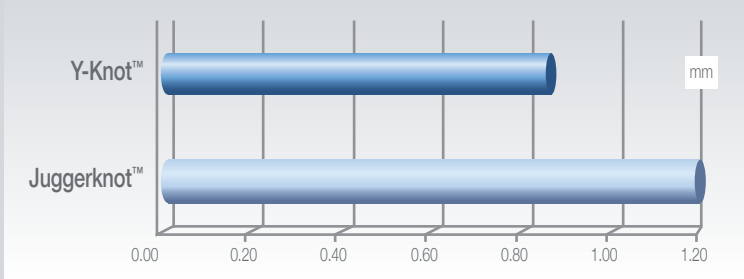
*Simple Technique: Drill Pilot Hole, Insert Anchor, and Pull-to-set*

## Cortical Pull-out Force Porcine Femur



Barber, FA. et al. Biomechanical Analysis of Pullout Strengths of Rotator Cuff and Glenoid Anchors: 2011 Update. *Arthroscopy*. 2011; 27:895-905.  
 Barber, FA. et al. Suture Anchor Materials, Eyelets, and Designs: 2008 Update. *Arthroscopy*. 2008; 24:895-867  
 Data on file.

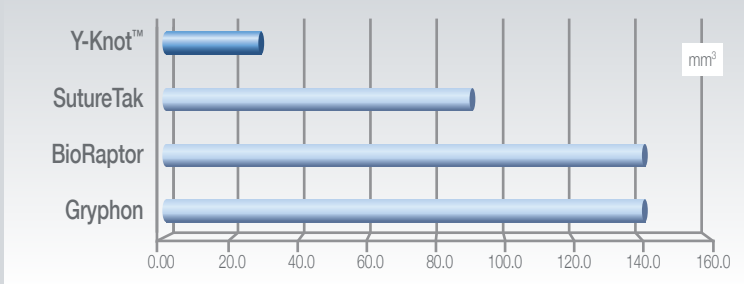
## Displacement (Creep) After 4000 Cycles



Data on file.

Shoulder  
Restoration  
System

## Required Bone Removal



Data on file.

## Y-Knot™ 1.3mm All-Suture Anchor

Y-Knot All-Suture Anchor

HF13

Y-Knot Disposable Drill Bit

HF13D

Drill Guide - Fishmouth

C6171

Drill Guide - Serrated

C6172

Blunt Obturator

C6173

Sharp Trocar

C6174

ConMed Linvatec  
Shoulder Restoration System

11311 Concept Boulevard  
Largo, Florida 33773-4908

Local 727-392-6464  
Toll Free 800-237-0169

Website [www.linvatec.com](http://www.linvatec.com)  
Email [customer\\_service@linvatec.com](mailto:customer_service@linvatec.com)